

# MOTOR DAMPER

Subsidiary Materials for Ventilation

Ver 1.0



[ Plastic M.D ]



[ Steel M.D ]

## User Manual













- Thanks for your purchase of a product of HIMPEL Co., Ltd.
- Please read this instruction manual carefully before use so that you may use the product long, more conveniently and safely.
- You must read 「Instructions for Safety」 before use and use the product correctly.
- Model: MDD-100DP, MDD-100DP-P, JMD-100H, JMD-125H

## Instructions for Safety

This instruction manual contains cautions for safe, how to install the product, etc in regard to the bathroom ventilation fan manufactured and distributed by our company. Please read carefully cautions for safe, operation, application and tips for checking, etc before use.

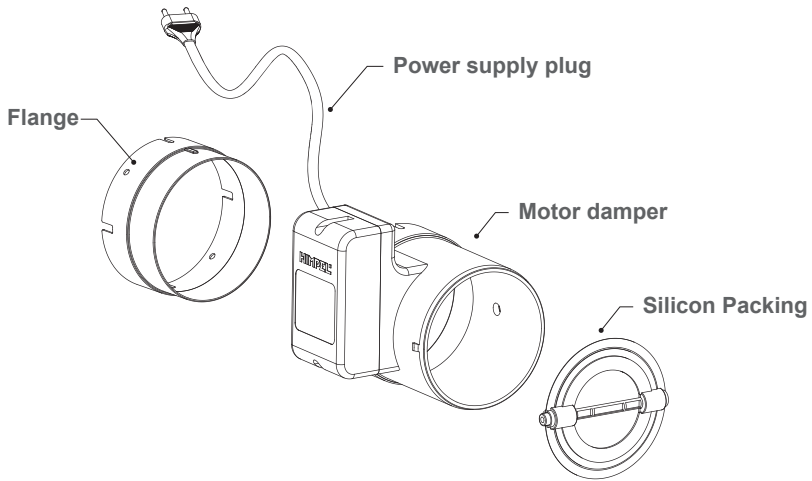
This product is a ventilation device to exhaust the polluted air in toilets and bathrooms of buildings such as apartment, high-rise residential building, shopping center, office, etc, which is made to realize a pleasant indoor environment by a constant exhaust.

### ! Warning

 <p><b>Do not disassemble</b>  <b>Never disassemble, repair or modify the product at your discretion.</b>            It may cause an electric shock, fire or injury.</p>	 <p><b>No wet hands</b>  <b>Do not handle the power switch with wet hands.</b>            You may get an electric shock or get injured.</p>
 <p><b>The present product has a Geared Motor, and arbitrary opening/closing of damper blade is prohibited.</b>            Motor gears can be damaged causing breakdowns, requiring paid A/S processing.</p>	 <p><b>If the power cord is damaged, stop using the product.</b>            You may get an electric shock or get injured.</p>
 <p><b>Do not allow water to enter electrical parts (motors, etc).</b>            It may cause equipment failure and an electric shock.</p>	 <p><b>Do not turn on or off the switch of the fan when gas is leaking.</b>            The spark of switch may cause explosion of gas.</p>
 <p><b>Cut off the power supply during installation or repair.</b>            You may get an electric shock or get injured.</p>	 <p><b>Prohibition of use of slation for other purpose.</b>            this unit is for the bathroom only.</p>
 <p><b>If the supply cord is damaged, it must be replaced by the manufacturer, its service agent or similarly qualified persons in order to avoid a hazard.</b></p>	 <p><b>Children should be supervised to ensure that they do not play with the appliance.</b></p>
  <p><b>This appliance is not intended for use by persons(including children) with reduced physical sensory or mental capabilities, or lack of experience and knowledge, unless they have been given supervision or instruction concerning use of the appliance by a person responsible for their safety.</b></p>	

## Name of parts

### MOTOR DAMPER



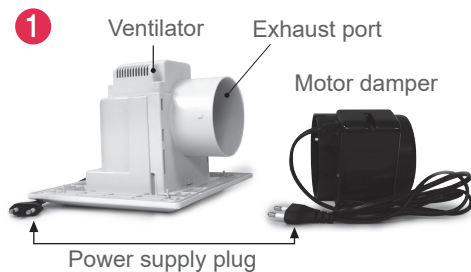
※ Depending on the model, there can be difference on configurations, grille and grille cover shapes.

## Product Specifications

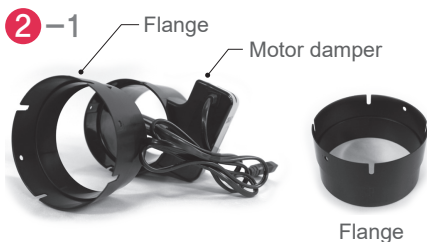
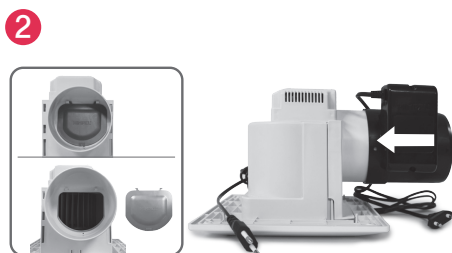
Product	MOTOR DAMPER			
Material	Plastic M,D(ABS)		STEEL M,D(EGI)	
Model	MDD-100DP	MDD100DP-P	JMD-100H	JMD-125H
Power consumption	3W		4W	
Weight(g)	440g	461g	745g	900g
Connecting Duct	ø99			ø123
purpose of use	For bathrooms		For Kitchen	

# How to connect the ventilator for installation

[Plastic M.D]



- 1) Prepare components.  
(Motor damper)



- 1) Please use a connecting flange when exhaust port diameter does not match.  
(Limited to MDD-100 model)

\* It is used when the size of ventilation hole is  $\phi 98.5 \sim \phi 100$ .



- 1) Installation is completed when the power supply plug is plugged in the socket.

\* This product is charging / discharging method, so please turn on the power for 5 minutes when using for the first time.

\* Bathroom MD : operate for 5 minutes  
Kitchen MD : After connecting the gas stove hood condenser, operate in the (strong) mode for 5 to 10 minutes.

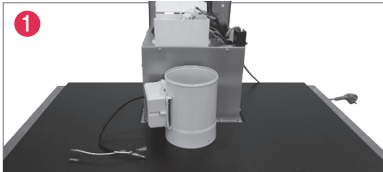
\* If you have any questions during installation, please contact TEL: + 82-31-424-8403.

# How to connect range hood for installation

[EGI (Steel) M,D]

## \* Notes before installation

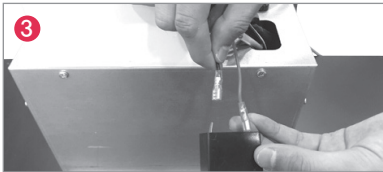
1. When problems occur due to arbitrary disassembly and installation of the product. They shall be processed for payment.
2. Installation through our company's agency or specialized installation engineer is recommended.
3. Conduct pilot operation by connecting the power supply of the range hood after connecting both No.6 terminal and starting capacitor. At this time, please check the normal status of the product.
4. While the present installation method is an installation method for general range hoods, please inquire of the headquarters before installation when installation is not possible. TEL: 82-31-424-8403



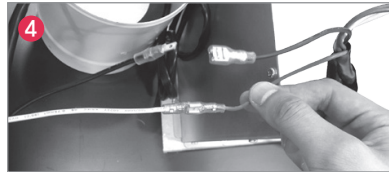
- Prepare components.



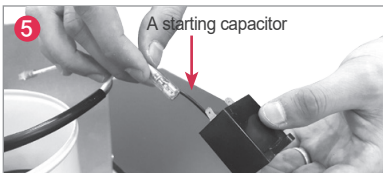
- Check starting capacitor in PCB unit.



- Separate terminal (female) coupled to the starting capacitor.



- Connect the terminal (female) and the other terminal (male).



- Couple the terminal (female) to the starting capacitor of range hood.



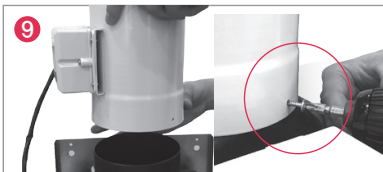
- Conduct pilot operation after checking the connection state of both terminal and starting capacitor.



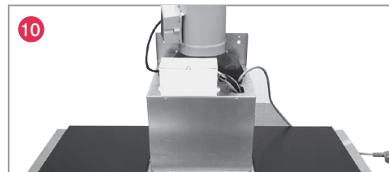
- Put the connected starting capacitor in PCB.



- Close the PCB and fasten the screws.



- Finish by fastening the screws after insertion of motor damper in the exhaust port of range hood.



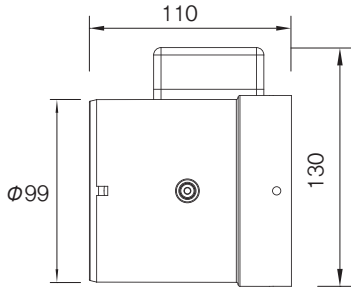
- Installation is complete.

# Product Specifications

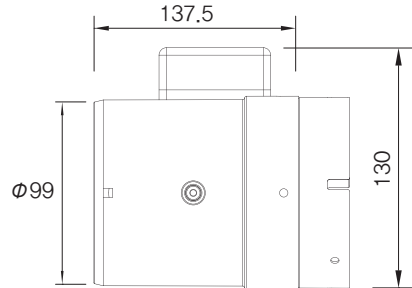
## MOTOR DAMPER

### Dimension

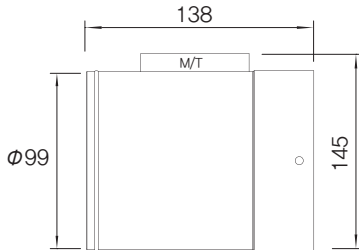
#### ■ MDD-100DP



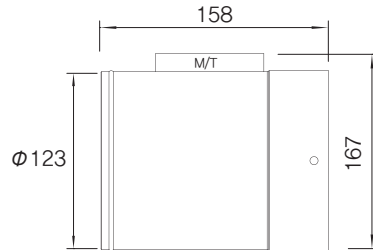
#### ■ MDD-100DP-P



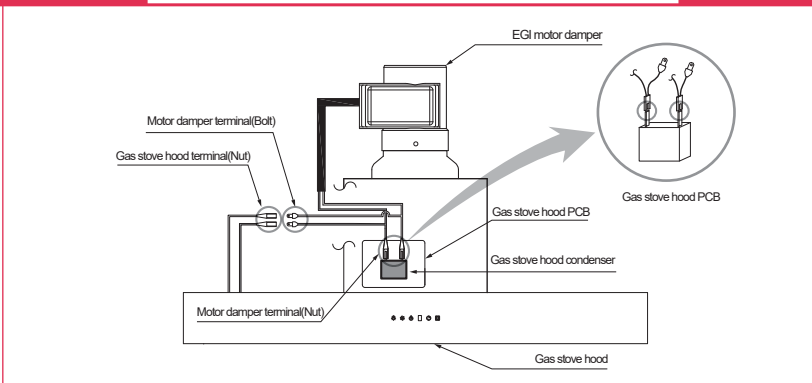
#### ■ JMD-100H



#### ■ JMD-125H



## Checkpoints before A/S request





# Product warranty



## Regarding the service

Himpel has implemented the product warranty as follows in accordance with compensation regulation for consumers' damages on each item. Upon the service request, such service shall be conducted by Himpel service or designated cooperative companies.

The notification of content and whether the compensation shall be made will be given within 7 days from the requested date, and the compensation for damages shall be settled within 14 days from such notification date.

Name of product		Name of model	
Purchased date	Date Month Year	Purchased price	
Agent purchased from			

## Service

If the product has been breakdown during its usage, the customer shall be entitled to be serviced without a charge of fee for 1 year after the date of completed installation. However, if the product has been breakdown due to the mistake of customer or natural disaster, the repair shall be charged with a fee even if it is in the non-chargeable period.

A/S fee is comprised of engineering fee, component cost, and on-site visitation fee.

- Engineering fee is the expense of inspection upon the completion of repair, component replacement and adjustment for the diagnosis & breakdown area.
- The component cost is the expense of component & other materials used in repair.
- The on-site visitation fee is the cost of dispatch A/S personnel to the location of product upon the request of customer.

## Free service

During the warranty period, the defects of device & equipment itself other than careless handling or operation of customer shall be repaired & replaced without a charge.

The claim for warranty shall be categorized as follows;

- When the excessive noise has occurred due to unbalanced fan or any other abnormalities.
- When the actual operation is not consisted with the status of control mode.
- When the power is normally supplied but the fan is not working.

## Paid service

- When the customer disassembles/assembles the equipment with own discretion and caused abnormalities on operation.
- When the product has been damaged due to wrong connections.
- Periodic inspection & maintenance

※ Please keep it along the owner's manual as it will not be reissued.

Customer service : + 82-31-424-8403

Head office : Annyeongnam-ro 8beon-gil 4, Hwaseong-si, Gyeonggi-do, Republic of Korea

**HIMPEL**



# HIMPSEL

## HIMPSEL

---

**Head office/Plant**

Annyeongnam-ro 8beon-gil 4,  
Hwaseong-si, Gyeonggi-do,  
Republic of Korea